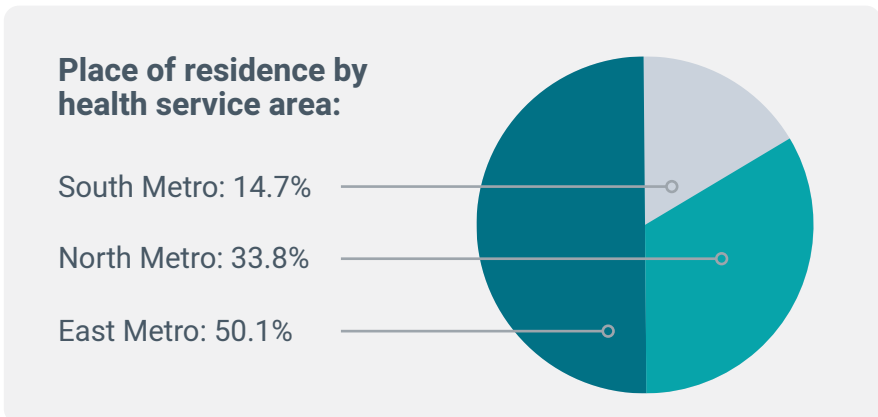
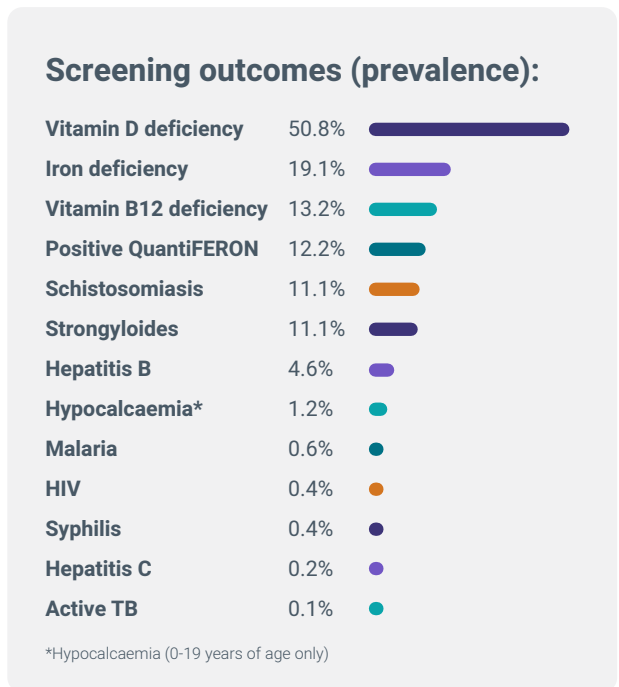
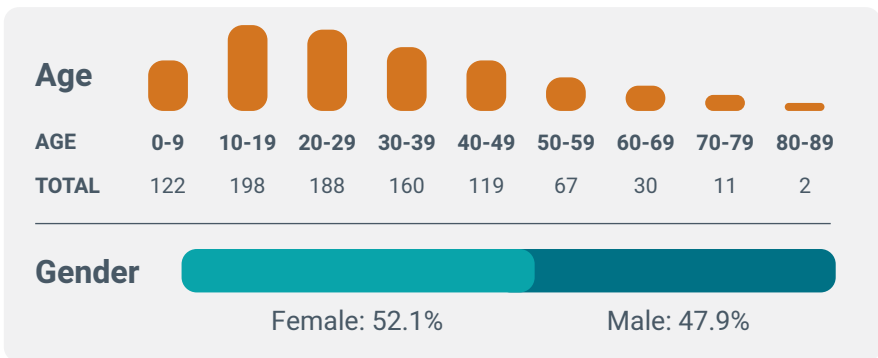
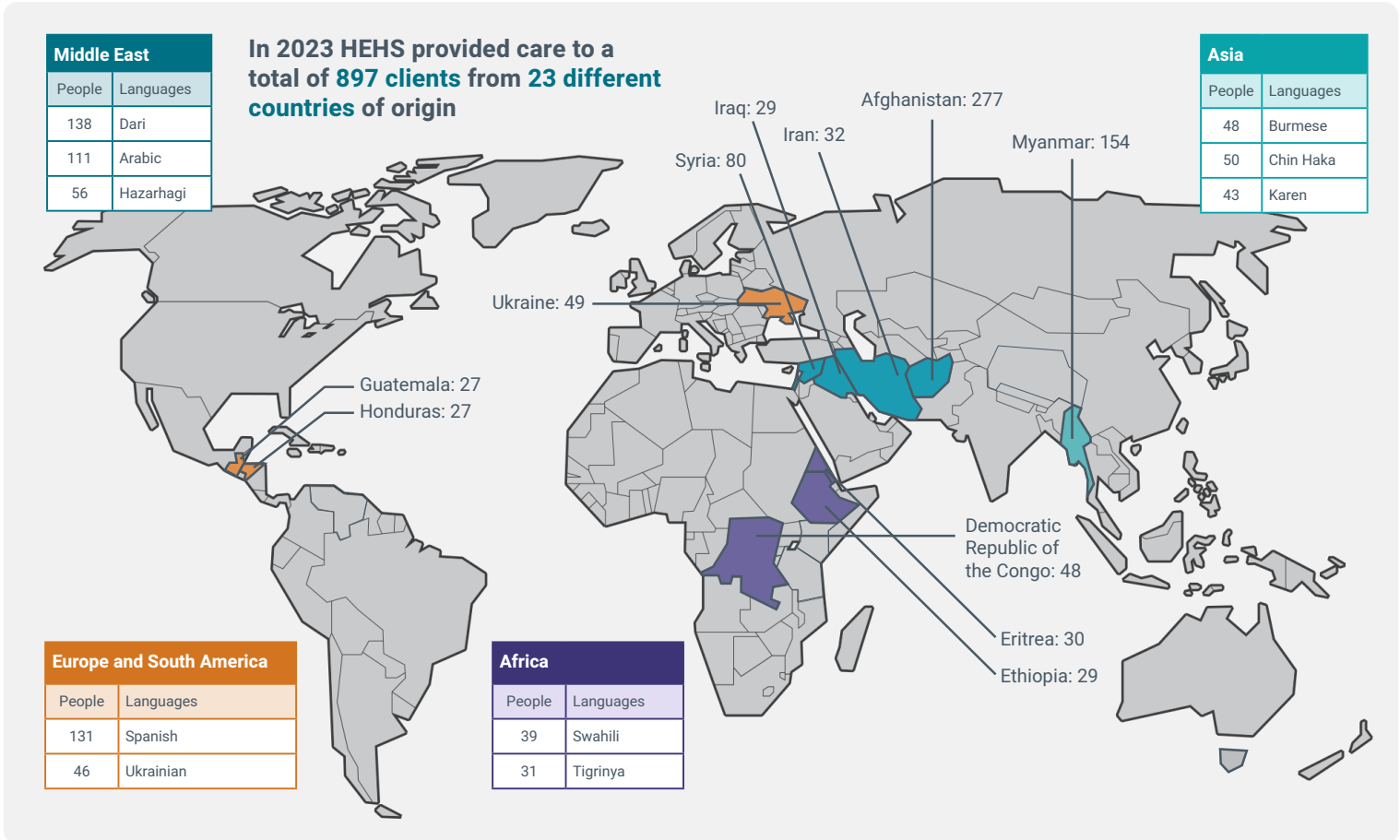




# Humanitarian Entrant Health Service 2023

The Humanitarian Entrant Health Service (HEHS) is a specialist public health program which provides holistic health assessment for all humanitarian entrants (refugees) who are resettled in Western Australia (WA) under the Commonwealth Government's Humanitarian Program and Special Humanitarian Program.



**For further information contact:**  
 HEHS@health.wa.gov.au or 08 9222 8500